

#### European Union (EU-27)

##### 12-months ending March

Volume (tonnes swt)	Chilled		Frozen		Total	
	12-months ending March	Y-O-Y % chg.	12-months ending March	Y-O-Y % chg.	12-months ending March	Y-O-Y % chg.
Total	1,519	-29	2,335	-24	3,854	-26
Lamb	1,519	-29	2,123	-20	3,642	-24
Mutton	-		212	-51	212	-51

##### Calendar year-to-March

Chilled		Frozen		Total	
2021 YTD	Y-O-Y % chg.	2021 YTD	Y-O-Y % chg.	2021 YTD	Y-O-Y % chg.
548	-19	171	-83	719	-57
548	-19	185	-81	733	-56
-	-	(14)	-193	(14)	-193

##### Month of March

Chilled			Frozen			Total		
2021 March	M-O-M % chg.	Y-O-Y % chg.	2021 March	M-O-M % chg.	Y-O-Y % chg.	2021 March	M-O-M % chg.	Y-O-Y % chg.
49	-85	32	97	84	-77	147	-61	-69
49	-85	32	80	30	-81	130	-66	-72
-	-	-	17	-292	17	17	-292	17

#### United Kingdom

##### 12-months ending March

Volume (tonnes swt)	Chilled		Frozen		Total	
	12-months ending March	Y-O-Y % chg.	12-months ending March	Y-O-Y % chg.	12-months ending March	Y-O-Y % chg.
Total	2,047	28	6,449	-8	8,496	-1
Lamb	2,047	28	3,699	-22	5,746	-9
Mutton	-		2,750	22	2,750	22

##### Calendar year-to-March

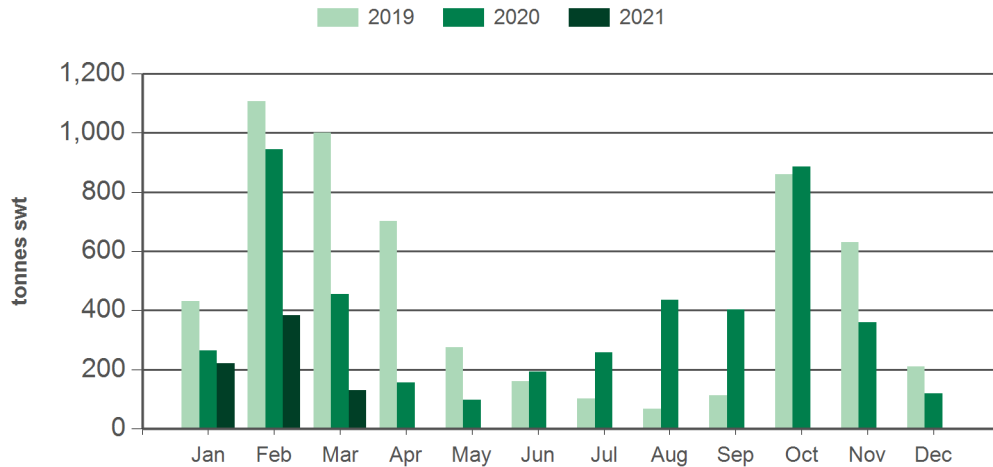
Chilled		Frozen		Total	
2021 YTD	Y-O-Y % chg.	2021 YTD	Y-O-Y % chg.	2021 YTD	Y-O-Y % chg.
531	-17	1,355	-34	1,886	-30
531	-17	745	-42	1,276	-33
-	-	610	-22	610	-22

##### Month of March

Chilled			Frozen			Total		
2021 March	M-O-M % chg.	Y-O-Y % chg.	2021 March	M-O-M % chg.	Y-O-Y % chg.	2021 March	M-O-M % chg.	Y-O-Y % chg.
192	-7	3	432	-25	-31	624	-20	-23
192	-7	3	293	-6	-29	485	-6	-19
-	-	-	139	-47	-35	139	-47	-35

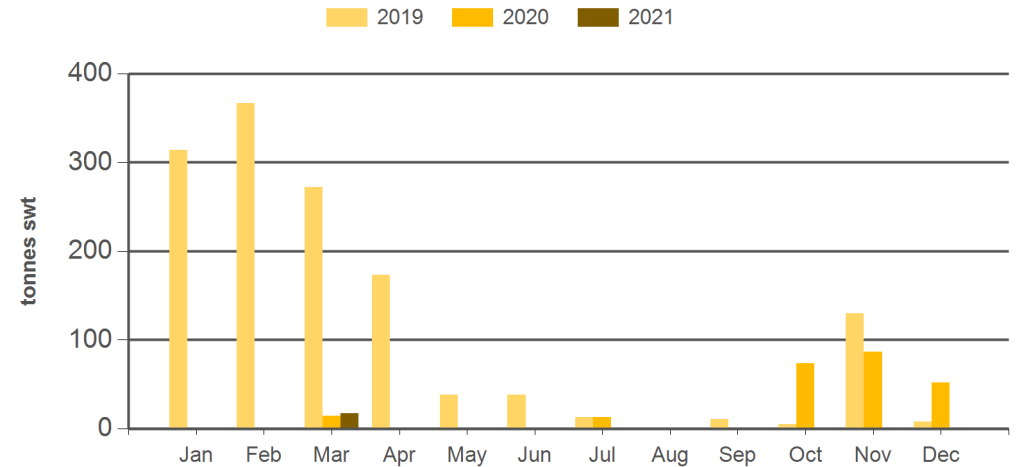
Source: DAWR. YTD = Calendar year-to-March. Y-O-Y = Year-on-year. M-O-M = Month-on-month. SWT = Shipped weight. For further information email [globalindustryinsights@mla.com.au](mailto:globalindustryinsights@mla.com.au).

#### Monthly lamb exports to the EU



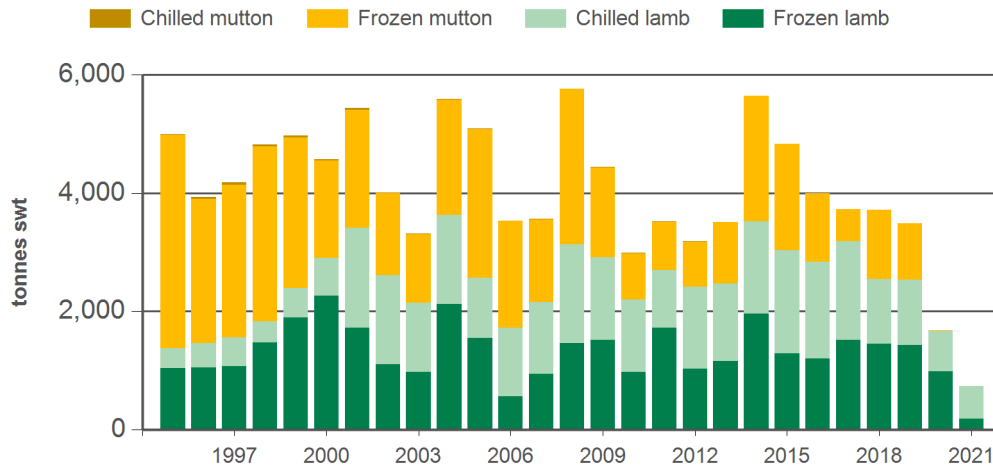
Source: DAWR, Prepared by MLA

#### Monthly mutton exports to the EU



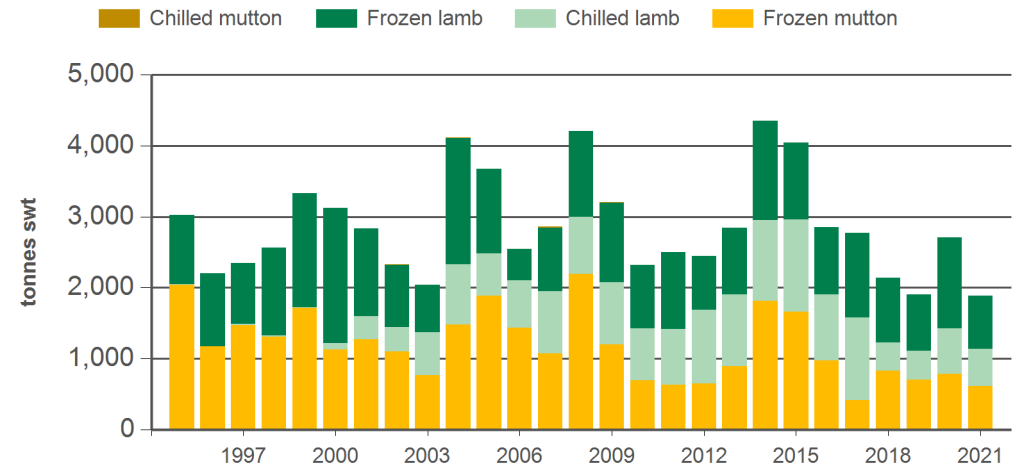
Source: DAWR, Prepared by MLA

#### Year-to-March sheepmeat exports to the EU



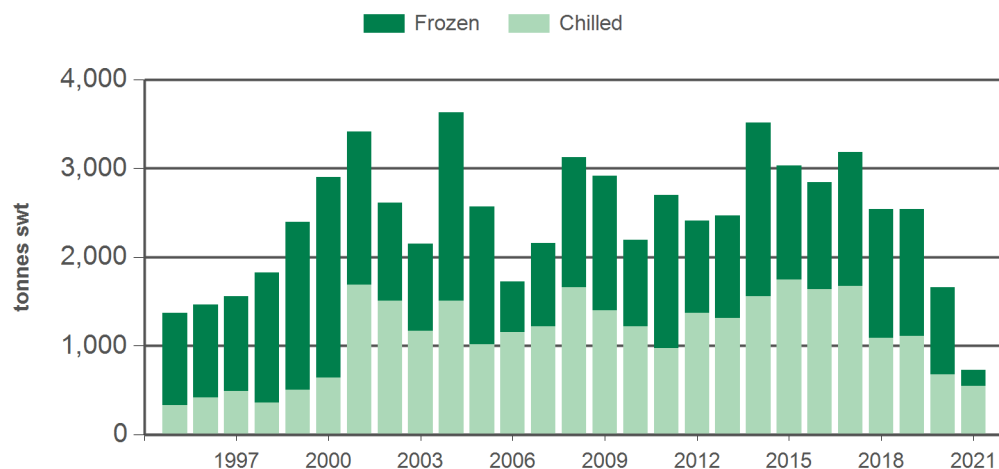
Source: DAWR, Prepared by MLA

#### Year-to-March sheepmeat exports to the UK



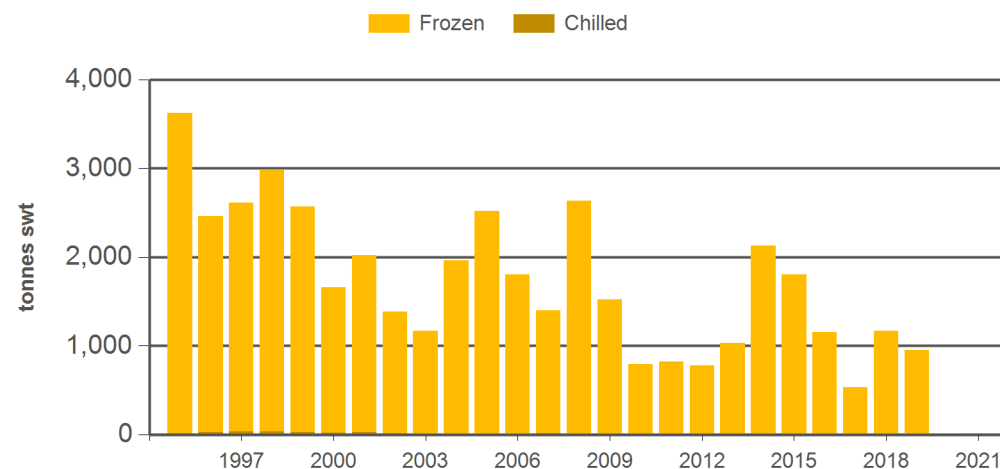
Source: DAWR, Prepared by MLA

#### Year-to-March lamb exports to the EU



Source: DAWR, Prepared by MLA

#### Year-to-March mutton exports to the EU



Source: DAWR, Prepared by MLA

#### Historical sheepmeat exports to the European Union (EU-27) - Calendar year totals

Volume (tonnes swt)	2006	2007	2008	2009	2010	2011	2012	2013	2014	2015	2016	2017	2018	2019	2020	2021 YTD	Y-O-Y % chg.
Total	18,827	19,734	19,015	19,099	16,893	16,458	15,852	16,735	18,758	16,195	16,471	15,454	15,295	7,028	4,813	719	-57
Lamb	11,808	12,734	11,581	13,730	11,951	12,930	12,129	11,747	14,042	10,656	11,512	10,281	10,008	5,658	4,573	733	-56
Mutton	7,020	7,000	7,434	5,370	4,941	3,528	3,723	4,988	4,716	5,539	4,959	5,174	5,288	1,369	240	(14)	-193

#### Historical sheepmeat exports to the United Kingdom - Calendar year totals

Volume (tonnes swt)	2006	2007	2008	2009	2010	2011	2012	2013	2014	2015	2016	2017	2018	2019	2020	2021 YTD	Y-O-Y % chg.
Total	13,604	14,643	13,058	13,826	13,151	11,426	12,296	13,354	14,832	12,921	12,378	10,927	9,698	7,788	9,313	1,886	-30
Lamb	8,185	9,105	7,104	9,384	8,754	8,780	9,016	9,124	10,561	7,806	7,950	6,567	5,691	5,616	6,388	1,276	-33
Mutton	5,418	5,539	5,954	4,442	4,397	2,646	3,279	4,230	4,271	5,115	4,428	4,360	4,006	2,172	2,925	610	-22

Source: DAWR. YTD = Calendar year-to-March. SWT = Shipped weight. For further information email [globalindustryinsights@mla.com.au](mailto:globalindustryinsights@mla.com.au).